

Safety Concerns With Proposed Grade 7-12 School At 20 Woolner Trail

UPDATES IN RED

SPEED (REGION OF WATERLOO)

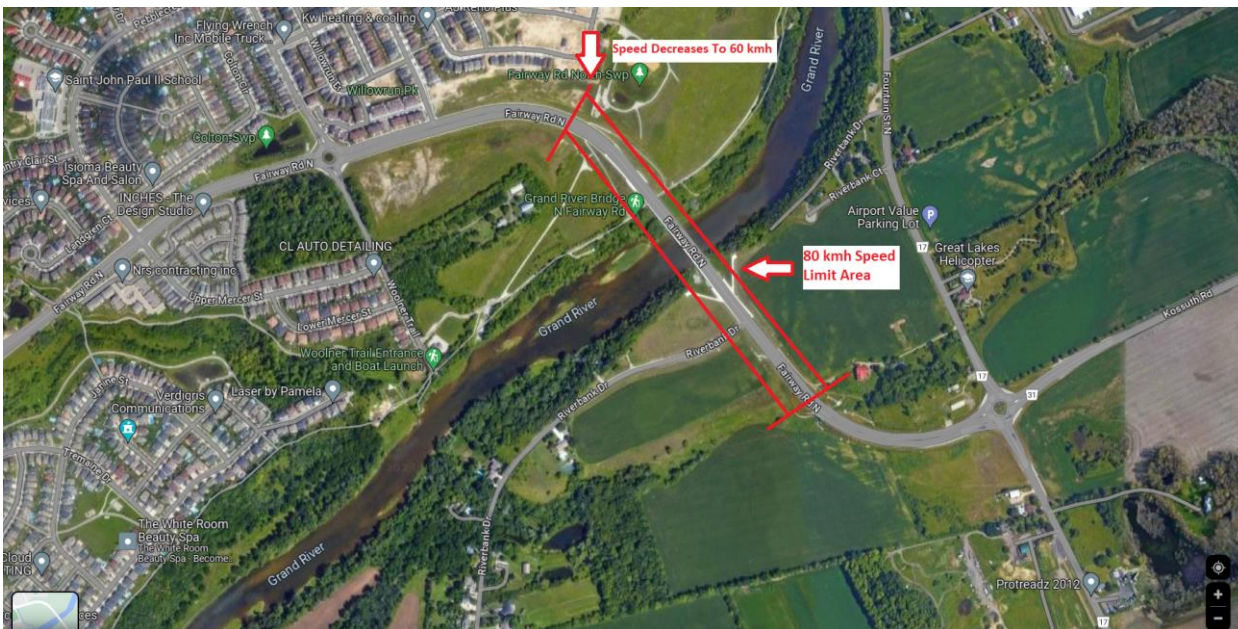
Coming out of the Fairway Road/Fountain Roundabout the speed limit on Fairway Rd North increases to 80kmh. The image below shows the approximate 700 metre 80kmh area to where it decreases to 60. **The Region of Waterloo will re-examine the 80 km/h limit and consider lowering it prior to the projected school opening in 2026**

This is close to Eden Oak Trail and the school property. Drivers don't always slow down right where the 60kmh sign is located. It is also close to the Roundabout where students will be crossing. **The Region of Waterloo will examine beginning the 60 km/h zone further away from the school zone**

School Zones where speeds can be decreased are currently not permitted on major arterial roads. This is also an issue for Chicopee Hills School at the corner Fairway and Lackner Road, close to this property. **The WCDSB added an entrance and exit to their property from Fairway Road. This allows The Region to create a 40 km/h school zone with a speed limit of 40 km/h on Fairway Rd. along the school property and use Automated Speed Enforcement Cameras.**

A Community Safety Zone is an option for the Region of Waterloo to implement. Could a 50 kmh zone from Eden Oak Trail through to Idlecreek Dr/Fairway Crescent be put in place to enhance safety at this school and Chicopee Hills School? See the image for Crossing Guard section for an illustration of this. **The Region of Waterloo is bringing a report to their council on creating Community Safety Zones in early 2024. If passed by Council, Community safety zones can be created around school properties.**

For St. Mary's High School serviced by a Roundabout at Homer Watson and Bleams Road, the speed on Homer Watson is 70kmh with a drop to 50kmh well ahead of the Roundabout and a further decrease to 30kmh at the Roundabout. **The Region of Waterloo will examine the 70 to 50 decrease. They have committed to a 30 km/h speed limit in the Roundabout. The school zone they are creating will drop the speed on Fairway Road along the school property to 40km/h**



VEHICLE ACCESS POINTS & CROSSING FAIRWAY RD. AND WOOLNER TRAIL

Having the primary vehicle access points to this property on Fairway Road is the foundation of a safer experience for students. **The WCDSB has added entrance and exit points from Fairway Road.**

Students crossing at the Roundabout at Fairway Rd. and Woolner Trail will have to contend with a high volume of vehicles and buses using the Roundabout to access Woolner Trail. **The City of Kitchener will decrease the speed on Woolner Trail along the school property to 30km/h to align with the school opening. The Region of Waterloo will make the speed limit in the Roundabout 30. The WCDSB is constructing and maintaining a Multi-Use Path on Woolner Trail along their school property**

It is safer for students if the vehicle access points are from Fairway Rd. Further safety enhancements should include a signalled Pedestrian Crosswalk at Fairway Road and Eden Oak Trail **The WCDSB has added entrance and exit points from Fairway Road**

The roadway distance on Woolner Trail between the proposed vehicle access points to school and the roundabout is short. Congestion in this area will be a reality. **The WCDSB has added a student drop off area on their property. School bus staging for drop off and pick up will be done on the school property.**

To relieve vehicle congestion on Woolner Trail and increase student safety, vehicle access to and from the site should come from right in, right out driveways on Fairway Road. (See image below) **he WCDSB has added entrance and exit points from Fairway Road**

Depending on where they live, students will need to cross either Fairway or Woolner Trail to get to this school. Crossing Fairway involves crossing 4 lanes of traffic at a Roundabout. **The City of Kitchener will have a crossing guard at the Roundabout and will add others if needed.**

Crossing Woolner Trail would involve dealing with cars and buses coming through the roundabout to access the school from its entrance/exit on Woolner Trail and from vehicles exiting the school onto Woolner Trail. **The City of Kitchener will have a crossing guard at the Roundabout and will add others if needed.**

There may be issues with some students crossing Fairway at Eden Oak Trail. **The Region is studying installing a signaled pedestrian crossing here. The light would turn red when the signal is pressed by a pedestrian. They are also studying creating a pedestrian refuge island in the middle of Fairway Rd.**

The traffic lighted intersection at the Fairway and Upper Mercer/Pebblecreek (see image below) has a crossing guard and may be a location where students chose to cross Fairway. They would still have to cross Woolner Trail to get to school. **The City of Kitchener will have a crossing guard at the Roundabout and will add others if needed.**



Some parents, for safety reasons or due to backups on Fairway Road may choose to turn right onto Upper Mercer Drive and drop their child off on Upper or Lower Mercer Drive or on Woolner Trail. Students would walk down Upper or Lower Mercer to Woolner Trail and cross it to get to the school. **The WCDSB has added a student drop off area on their property.**

Upper Mercer Drive has been flagged for seasonal traffic calming consideration for spring 2024 so safety issues are already there even without the school being built. **The City of Kitchener will install Seasonal Traffic Calming Measures on Upper and Lower Mercer in Spring 2024. More monitoring will take place for Formal Traffic Calming for Upper and Lower Mercer Drive. If requirements are met, more measures will be installed. Parking and Stopping on Woolner Trail will be prohibited once school is opened in 2026. Truck and service vehicle access to the site will be done from School access points on Woolner Trail and from Fairway Road Access points.**

Residents on these streets will face safety challenges seeing pedestrians as they try getting in or out of their driveways with cars are stopping to drop children off. **The WCDSB has added a student drop off area on their property.**

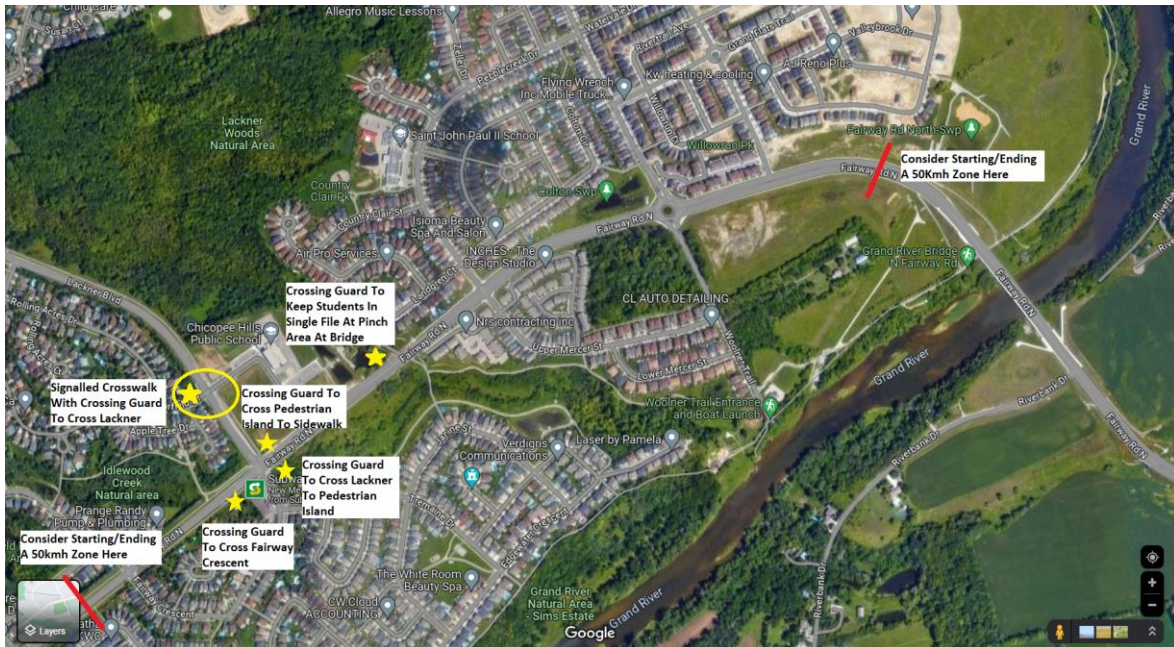
The image above shows where students would cross Fairway Rd and Woolner Trail at The Roundabout, potential vehicle access points area from Fairway Road, an area where students may chance crossing Fairway, (a potential signalled crossing location) and the vehicle access point area for the school proposed on Woolner Trail **The Region is studying installing a signalled pedestrian crossing here. The light would turn red when the signal is pressed by a pedestrian. They are also studying creating a pedestrian refuge island in the middle of Fairway Rd. The WCDSB has added entrance and exit points from Fairway Road.**

There is no sidewalk on the side of Woolner Trail where the in and out access points are located. There are hydro polls on that side and adding a sidewalk would be challenging. **The WCDSB is constructing and maintaining a Multi-Use Path on Woolner Trail along their school property**

CROSSING GUARDS

This image below shows the crossing guard locations for Chicopee Hills School and the signalled cross walk at Lackner and Corfield. The Fairway/Lackner intersection has traffic lights. It also shows a potential 50kmh zone to benefit this new school and Chicopee Hills School. **The Region of Waterloo is bringing a report to their council on creating Community Safety Zones in early 2024. If passed by Council, Community safety zones can be created around school properties.**

5 crossing guards are used for student safety at this JK to Grade 8 school. This new school proposed at 20 Woolner Trail will be a Grade 7 to 12 school. Crossing will be done at a Roundabout area. **The City of Kitchener will have a crossing guard at the Roundabout and will add others if needed.**



CONCLUSION

The main way to address many safety issues with this site is to have the vehicle access point to the school property come from right in, right out lanes on Fairway Road. **The WCDSB has added entrance and exit points from Fairway Road**

A signalled crosswalk at Eden Oak Trail and Fairway Road is another prime safety measure to be added. **The Region is studying installing a signaled pedestrian crossing here. The light would turn red when the signal is pressed by a pedestrian. They are also studying creating a pedestrian refuge island in the middle of Fairway Rd**

Speed reduction to 50 on the stretch of Fairway from Eden Oak Trail to Idle Creek Drive/Fairway Crescent will enhance safety for students at this school and Chicopee Hills School. **The Region of Waterloo is bringing a report to their council on creating Community Safety Zones in early 2024. If passed by Council, Community safety zones can be created around school properties.**

Safety measures and site plan approval are not part of the granting of a zone change. Once Council grants a zone change, they have no further say on if or when safety measures will be in place. **Many of the issues have been addressed. An onsite meeting on January 12, 2024 with WCDSB staff, Region Of Waterloo staff & Councillors & Chair Redman and City of Kitchener Staff & Mayor Urbanovic was productive and shared commitment to keep addressing issues was evident.**

Residents do not have a concern with a school at this location. They feel it is a much-needed asset in their community. Safety concerns were shared during an onsite resident meeting with school board officials, members of Kitchener and the Region's traffic teams and Councillor Schnider. Concerns were acknowledged, but residents were told safety measures they brought up wouldn't be addressed proactively.

These concerns have been brought forward to those responsible, many meetings between the City, Region and WCDSB have taken place. Many issues have been addressed and resolved. Those that could not be resolved prior to Council's decision on January 22, 2024 have not been forgotten and will continue to be studied. Follow ups will take place between now and the projected school opening in 2026

Residents hope their concerns and suggestions will be considered, more investigation and discussion can take place and that safety measures will be in place before the school opens. Residents are concerned that if the zone change is granted, that issues brought forward in these safety discussions will no longer be considered. **Many issues are resolved Follow ups will take place between now and the projected school opening in 2026 are those that could not be resolved prior to January 22, 2024.**

Residents hope a promise and list of safety measures from the Region of Waterloo and the City of Kitchener can be part of the approval mechanism for the zone change application. **After hearing the updates along the way and at the Council meeting of January 22, 2024. Council unanimously approved the zone change application**